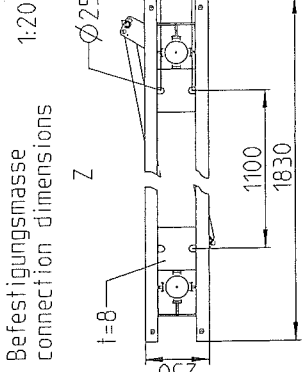
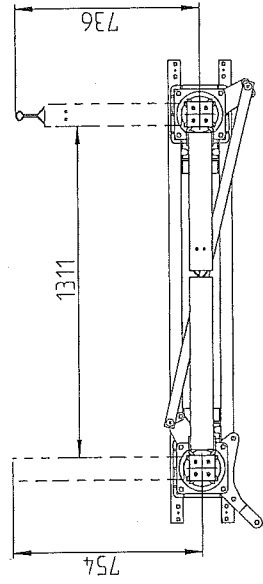
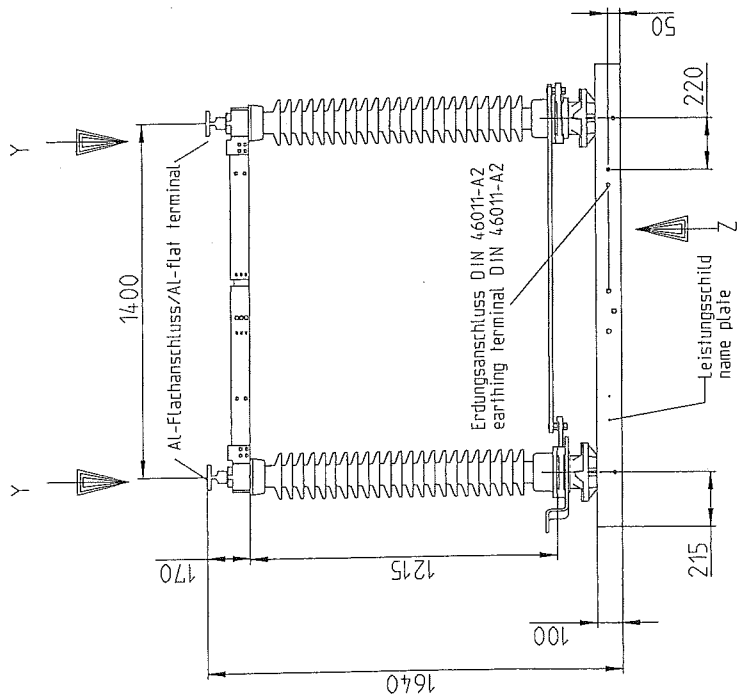


This document and any information or descriptive matter set out in it are confidential and copyright property and must not be disclosed, loaned, copied or used for any purpose whatsoever without prior written permission.

Dieses Dokument sowie alle Informationen und Daten, die es enthält sind vertraulich und somit geistiges Eigentum des Urhebers. Sie dürfen ohne vorherige schriftliche Erlaubnis weiter verbreitet, zur Verfügung gestellt, kopiert noch für irgendwelche Zwecke verwendet werden.



Technische Daten
technical parameters

Nennspannung:
rated voltage: 123 kV

Nenn-Betriebsstrom:
rated current: 1600 A

Nenn-Kurzzeitstrom:
rated short time current: 31.5 kA, 1s

Motorantrieb Trennschalter
motor drive disconnecting switch

Hersteller-Typ:
type: CMM 01

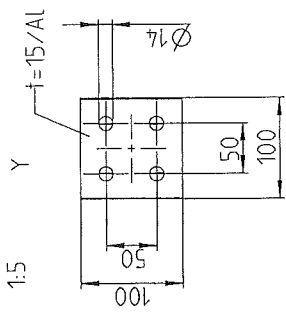
Schwingenradius:
radius of rocker arm: 118 mm

Gewichte pro Pol
weights per pole: 210 kg

Trennschalter-
disconnecting switch: 60 kg

Motorantrieb:
motor drive:

Anschlussflaeche
terminal



ERZEUGT DATE: 2005-03-01 NAME: GARBE	FRE GABE DATE: 2005-03-01 NAME: GARBE	ALLGEMEINTOLERANZ ISO 2768 -cK	EC DATUM: EC NUMBER: URSPRUNG:
--	---	-----------------------------------	--------------------------------------

A3
TRENNSCHALTER
DISC. SWITCH

AGK Kassel Germany

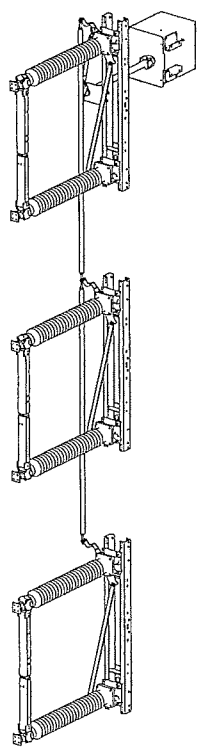
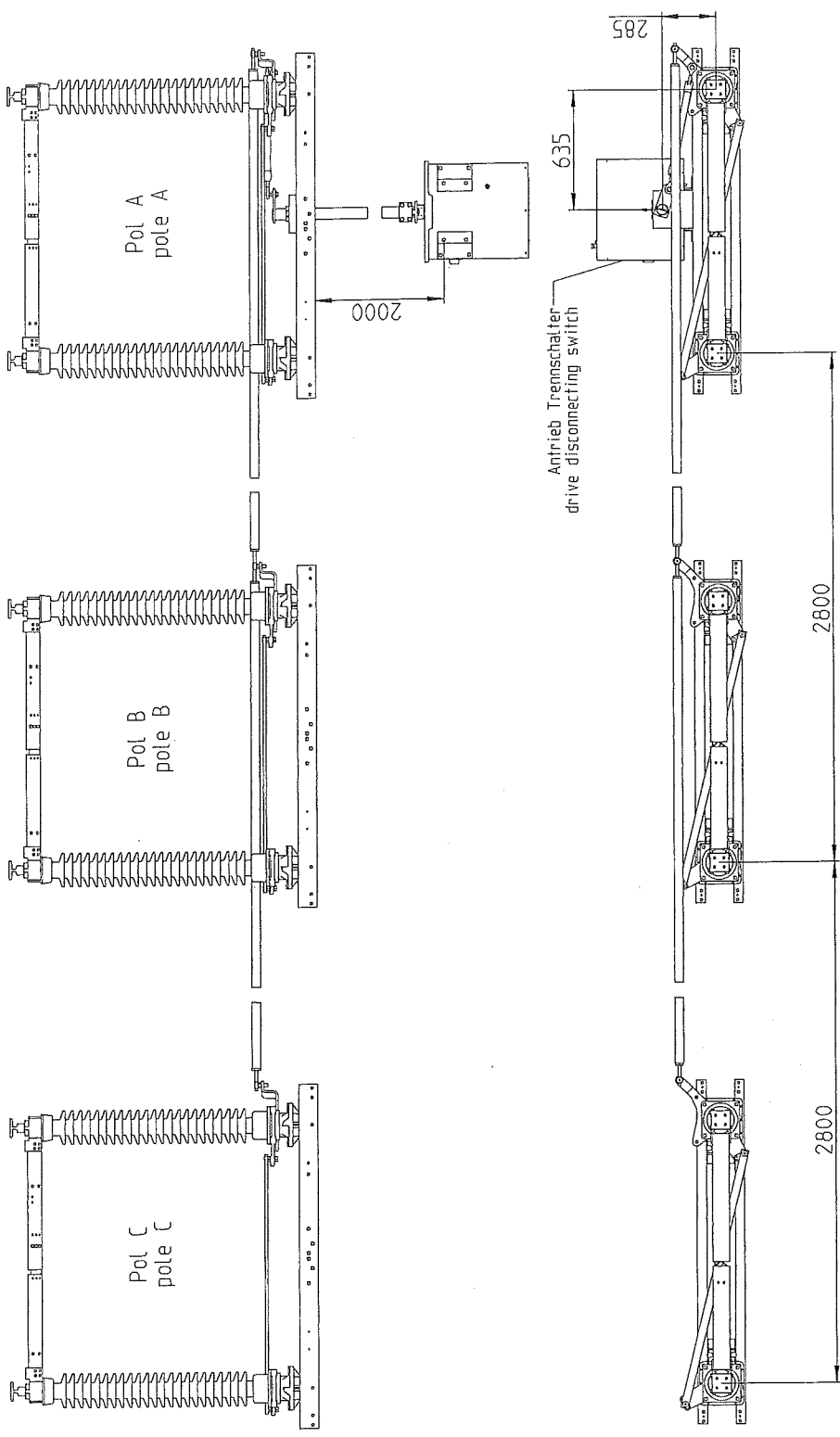
AGK Kassel Germany

REVISION
00
VER 0-

Modell: MB4824-50-2020996/00/00/Released

Dieses Dokument sowie alle Informationen und Daten, die es enthält sind vertraulich und somit geistiges Eigentum des Erfinders. Sie dürfen ohne vorherige schriftliche Erlaubnis weder verbreitet, zur Verfügung gestellt, kopiert noch für irgendwelche Zwecke verwendet werden.

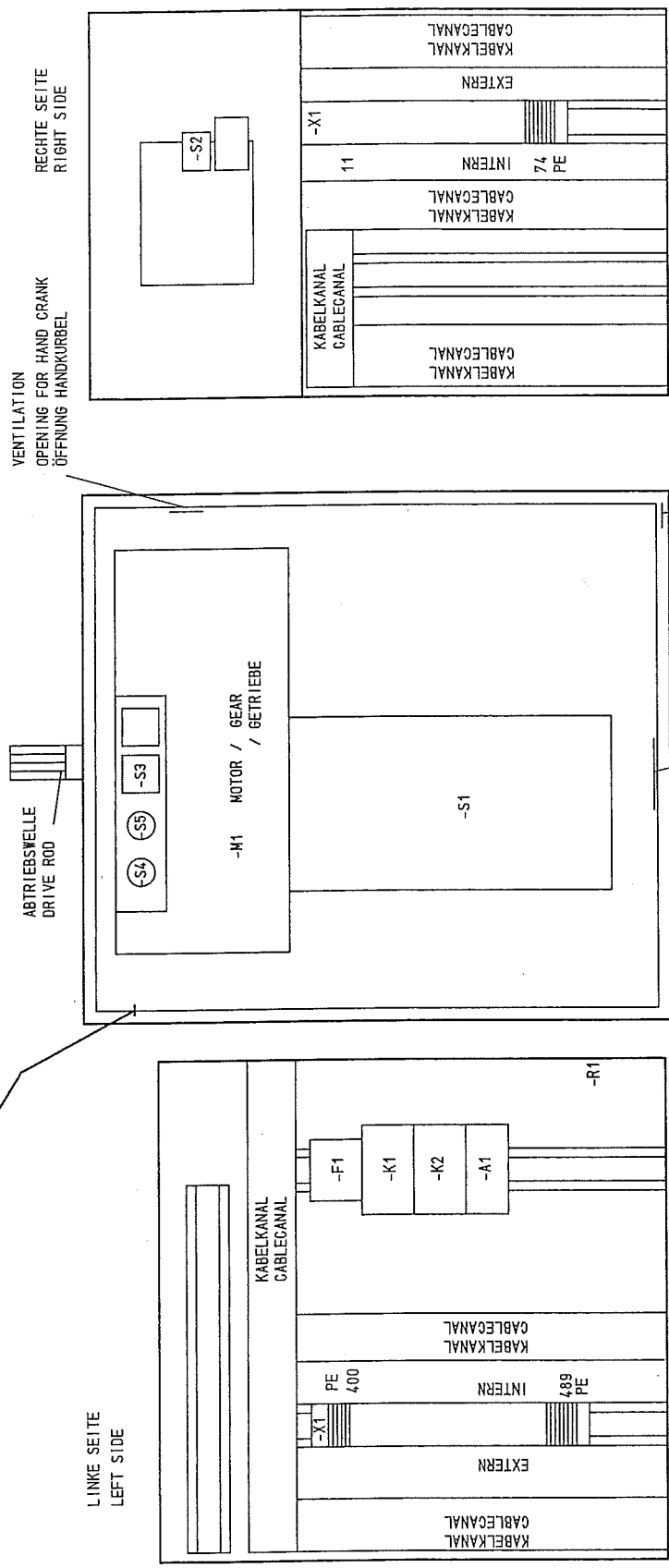
This document and any information or descriptive matter set out in it are confidential and copyright property and must not be disclosed, loaned, copied or used for any purpose whatsoever without prior written permission.



ERZEUGT DATUM: 2005-03-01 NAME: GARBE	FREIGABE DATUM: 2005-03-01 NAME: GARBE	ALLGEMEINTOLERANZ ISO 2768 -CK	EC DATUM: / EC NUMBER: / URSPRUNG: /
A3	⊕	TRENNSCHALTER DISC. SWITCH	D300-121631M/H
MASSSTAB %		SEITE 2/2	REVISION 00 VER 0-
AREVA AGK Kassel Germany		MB4824-50-2020996	Released
		Modell: MB4824-50-2020996/00/00	Released

ERDUNGSANSCHLUSS TÜR
FLEX. EARTHING CONNEXION DOOR

MOTORANTRIEB CMM 01
MOTORDRIVE CMM 01



- A1 DIODENKOMBINATION
 - F1 MOTORPROTECTION RELAY
 - K1 SCHÜTZ EIN
 - K2 SCHÜTZ AUS
 - M1 MOTOR
 - R1 HEIZUNG
 - S1 HILFSSCHALTER
 - S2 SCHALTER HANDKURBEL
 - S3 F0-SCHALTER
 - S4 TASTER EIN
 - S5 TASTER AUS
 - X1 KLEMMENLEISTE
- RECTIFIER BRAKE
 - MOTORPROTECTION RELAY
 - CONTACTOR ON
 - CONTACTOR OFF
 - MOTOR
 - HEATING
 - AUXILIARY SWITCH
 - SWITCH HAHNCRANK
 - SWITCH RL
 - PUSH BUTTON ON
 - PUSH BUTTON CLOSING
 - TERMINAL STRIP

Copyright as per DIN 34 to be observed!

TR-EN-03
= 4824-40
B01
APE2

Date		24.02.2005	Date		24.02.2005	Date		24.02.2005	Date		24.02.2005
Drawn		BARBE	Drawn		BARBE	Drawn		BARBE	Drawn		BARBE
Date		06.05	Date		06.05	Date		06.05	Date		06.05
Revision		0000	Revision		0000	Revision		0000	Revision		0000
Name			Name			Name			Name		
Norm			Norm			Norm			Norm		
Origin			Origin			Origin			Origin		
Sub.f.			Sub.f.			Sub.f.			Sub.f.		
Rpl.by:			Rpl.by:			Rpl.by:			Rpl.by:		
AGK			AGK			AGK			AGK		
STROMLAUFPLAN			STROMLAUFPLAN			STROMLAUFPLAN			STROMLAUFPLAN		
MOTORANTRIEB			MOTORANTRIEB			MOTORANTRIEB			MOTORANTRIEB		
CIRCUIT DIAGRAM			CIRCUIT DIAGRAM			CIRCUIT DIAGRAM			CIRCUIT DIAGRAM		
MOTORDRIVE			MOTORDRIVE			MOTORDRIVE			MOTORDRIVE		
CMM01			CMM01			CMM01			CMM01		
S		4824-40	S		4824-40	S		4824-40	S		4824-40
Sheet		B01	Sheet		B01	Sheet		B01	Sheet		B01
Sh.			Sh.			Sh.			Sh.		

HEIZUNG
HEATING

L1
AC 230 V

MOTOR
MOTOR

2L+
DC 220 V

446
447

448
449

-X1 400 401

-X1 480 481 482

-R1
/ZR1.1
15W

-X1 484 485 486

-X1 403 404 PE

N

444 445

420 421

-F1
/ZF1.1

-F1
/ZF1.1

-K1
/ZK1.1

-X1 441

-A1
/ZA1.1

-S1
/ZS1.1

-K1
/ZK1.1

-K2
/ZK1.1

-K2
/ZK1.1

-K1
/ZK1.1

-K2
/ZK1.1

-F1
/ZF1.1

-N1
/ZN1.1

BL/SW

SW/BL

-X1 442

-X1 443

-S1
/ZS1.1

-K2
/ZK1.1

-K1
/ZK1.1

-K2
/ZK1.1

-K1
/ZK1.1

-K2
/ZK1.1

-K1
/ZK1.1

-K2
/ZK1.1

-K1
/ZK1.1

-K2
/ZK1.1

-F1
/ZF1.1

440

441

442

443

444

445

446

447

448

449

450

451

452

453

454

455

456

457

458

459

460

461

462

463

464

465

466

467

STRONLAUFPLAN

MOTORANTRIEB

CIRCUIT DIAGRAM

MOTORDRIVE

CM01

CM01

CM01

CM01

AKG

AREVA

AKG

AREVA

Sub.f.

Rpl.by:

Date 24.02.2005

Drawn GARBE

06.05

06.05

Date

Name

Norm

2

State

Revision

01

0000

S = 4824-40

4824-40-2020996

Sheet

D01

Sh.

8

7

6

5

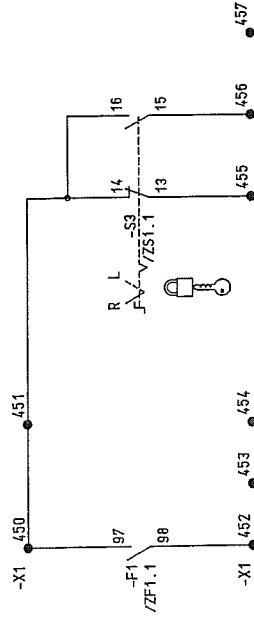
4

3

2

1

MELDUNGEN SIGNALISATION



OVERLOAD

REMOTE

LOCAL

ÜBERLASTRELAYS

FERN

ORT

Copyright as per DIN 34 to be observed!

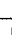




28.06.2005
TR EN-03
4824-40
R01
APE2

01	0000	Date	06.05	6UE	Drawn	24.02.2005	Date	24.02.2005	STROMLAUFPLAN	S	4824-40	8
State	Revision	Date	06.05	6UE	Drawn	24.02.2005	Date	24.02.2005	MOTORANTRIEB	CMMD1	4824-40-2020996	7
									CIRCUIT DIAGRAM	CMMD1		6
									MOTORDRIVE	CMMD1		5
									AGK AREVA			4
									Rpl.by:			3
									Sub.f.:			2
									Origin:			1

The diagram illustrates a 12-bit parallel adder circuit. It features two 12-bit inputs, $-X_1$ and $-X_2$, which are fed into a series of logic gates and flip-flops. The output is a 13-bit result, $-S_1$. The circuit is divided into two main sections by a dashed vertical line, representing the carry propagation path. The left section contains logic for the lower 12 bits, while the right section handles the carry and the final 13-bit output. Various components are labeled with numbers, including 101, 102, 103, and 104, which likely represent specific logic gates or flip-flops used in the design.

-X1 412 413 416 417
-X1 435 436 437
-X1 PE PE

 CONTACT CLOSED

MAIN CONTACT		ON RUN OFF	
NO		K	
NC		H	
EARLY MAKE CONTACT		G	
LATE BREAK CONTACT		F	
WIPING CONTACT		P=G+F	

COMMAND. ON.
SIGNAL. OFF. FINISH
BEGINNING MOVEMENT SWITCH

[illegible]

[illegible]

[illegible]

[illegible]

[illegible]

PART NUMBER		DESCRIPTION, DESIGN, TECHNICAL DATA MANUFACTURER, TYPE, ORDERING DESIGNATION		COMPLETE DEVICE REPRESENTATION OR REFERENCE WITH REFERENCE TO DETAIL DRAWINGS (CIRCULAR, SHEET, CURRENT PATH)		MARKS	
1		WIDERSTAND RESISTOR MANUF. : DALE ORD. NR. : TYPE: RH-50, 820 OHM					
TECHNICAL COMPONENTS		TYPE		ORDERING NUMBER			
50W							
APPLICATION HEIZUNG		SETTING VALUES		LOCATION		ITEM DESIGNATION	
		HEATING		+S		-R1	
				/001.2			

Copyright as per DIN 34 to be observed!

28.06.2005 TR 5N.03
 4824-40
 ZR1
 APE2

Date		24.02.2005		BETRIEBSMITTELPLAN		S = 4824-40	
Drawn		GARBE		MOTORANTRIEB		/ ZR1	
06.05		60E		LIST OF EQUIPMENT		Sheet	
Date		Name		MOTORDRIVE		4824-40-2020996	
Revision		Date		Sub.f.		Sh.	
01		0000		AGK AREVA		8	
State		Revision		RplBy:		6	
				Origin:		7	
				RplBy:		7	

		Date	24.02.205			BETRIEBSMITTELPLAN MOTORANTRIEB	CMMO1	S = 4824-40	/ ZS1
		Drawn	GARBE						
		Checked	LANGE						
101	0000	06.05	GIJE			AGK AREVA	CMMO1	4824-40-2020996	Sheet
State	Revision	Date	Name Norm	Origin:	Sub.f.: Rpl.by:	MOTORDRIVE	CMMO1		Sh.
				Δ 3	4	Δ 5	6	7	8

1

2

3

4

5

6

7

8

INSTRUCTIONS

DATE: 24.02.2005

Drawn: GARB

Checked: LANGE

Rev: 01

State: 01

TERMINAL-TYPE

STANDARD: PHC

STANDARD: HOVV-K 1,5 MM2

DATE: 06.05

Origin: 4824-40-2020996

Sub.f.: 4824-40-2020996

Sheet: 7

Sh: 8

REF-REND

LINE(Ø IN MM2)

CORE

DESTINATIONS

POT

NR

DESTINATIONS

CORE

LINE(Ø IN MM2)

CABLE

REMARKS

400

401

403

404

410

411

412

413

414

415

416

417

418

419

420

421

430

432

434

435

436

437

440

441

442

443

446

447

448

449

450

451

452

453

454

455

456

457

480

481

-X1

-X1

-S4

-K1

-F1

-S4

-K1

-F1

-S3

-S3

-S3

-M1

-K1

-M1

-K1

-F1

-S3

-S3

-F1

-S3

-S3

-R1

480

484

13

13

1

24

53

6

1

9

5

SW/BL

2

BL/SW

3

97

14

98

13

15

1

480

484

13

13

1

24

53

6

1

9

5

SW/BL

2

BL/SW

3

97

14

98

13

15

1

480

484

13

13

1

24

53

6

1

9

5

SW/BL

2

BL/SW

3

97

14

98

13

15

1

Copyright as per DIN 34 to be observed!

28.06.2005

TR EN 4824-40+5

AP2

K02

AP2

1		2		3		4		5		6		7		8	
INS		ATTENTION/INSTRUCTIONS		LINE MATERIAL		TERMINAL-TYPE		STANDARD: PHC		5N					
		POS.:		BK		-X1									
REFE- RENCE		LINE(Ø IN MM2) CABLE		CORE		DESTINATIONS		POT		NR		DESTINATIONS		LINE(Ø IN MM2) CABLE	
/D01.2										482					
/D01.2						-X1				484		-R1		2	
/D01.2										485					
/D01.2										486					
/M01.2										488		-K1		A2 Q	
/M01.2										489		-F1		95	
/D01.3										PE					
/R02.1										PE					
														PHOENIX, USKL610	
														PHOENIX, USKL610	

Copyright as per DIN 34 to be observed

28.06.2005
TR EN 03
K03
4824-40+S
AF2

Date		24.02.2005	
Drawn		GARBE	
06.05		6UE	
Date		Name	
Revision		Norm	
01		0000	
State		Revision	
Origin:		Sub.f.:	
Rpl.by:		AGK AREVA	
KLENNANSCHLUSSPLAN		CNM01	
MOTORANTRIEB		CNM01	
TERMINAL DIAGRAM		CNM01	
MOTORDRIVE		CNM01	
V		4824-40	
+S		7 K03	
4824-40-2020996		Sheet	
8		8	

S CONNECTIONS										WIRING MATE		H07V-K1.5 BK		1		2		3		4		5		6		7		8	
SHEET		POTENTIAL POSITION CROSS-SECTION		MATERIAL COLOUR		TERMINAL		DESTINATION 1		DESTINATION 2		DESTINATION 3		DESTINATION 4		DESTINATION 5		DESTINATION 6		PROFILE									
D01								-F1		2 -F1		4																	
D01								-F1		3 -K1		1 -K2		1															
D01								-F1		5 -K1		6 -K2		6															
D01								-K1		5 -K1		71 -M1		GN															
D01								-K2		5 -K2		71 -M1		WS															
D01								-S1		31 -K1		4 -K2		72 -A1		A													
D01								-S1		33 -K1		72 -K2		4 -A1		B													
D01						-X1		441 -K1		2 -K2		2																	
D01						-X1		443 -K2		3 -S1		34																	
D01						-X1		443 -K1		3 -S1		32																	
M01								-F1		96 -S2		21																	
M01								-K1		14 -K2		62 -S3		2															
M01								-K1		61 -S1		23																	
M01								-K1		62 -K2		14 -S3		10															
M01								-K1		A1 -S1		12																	
M01								-K2		61 -S1		11																	
M01								-K2		A1 -S1		24																	
M01								-S2		22 -K1		54 -K2		54 -S3		6													
M01								-S3		3 -S4		14																	
M01								-S3		7 -S4		23 -S5		23															
										QUERVERBINDUNGSLISTE MOTORANTRIEB CROSSCONNECTIONS MOTORDRIVE										CM01 CM01 CM01									
										AREVA										AGK Rpl.by:									
										Date 24.02.2005										V = 4824-40									
										Drawn GARBÉ										+S									
										06.05										4824-40-2020996									
										RUE										Sh.									
										Name Norm																			
										Date																			
										Revision																			
										1																			

Copyright as per DIN 34 to be observed!

28.06.2005
TR EN 03
4824-40+S
APE2
001

